

PROVIDENCE, R. I.
CITY ENGINEER'S OFFICE.
STREET LINE DEPT.

Aug. 30, 1887
013174

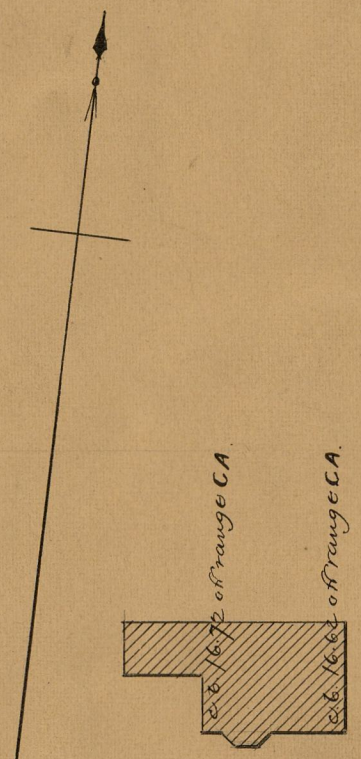
Providence R. I.
This plat accompanies
our report of this date.

PLAT OF
POMONA AVENUE

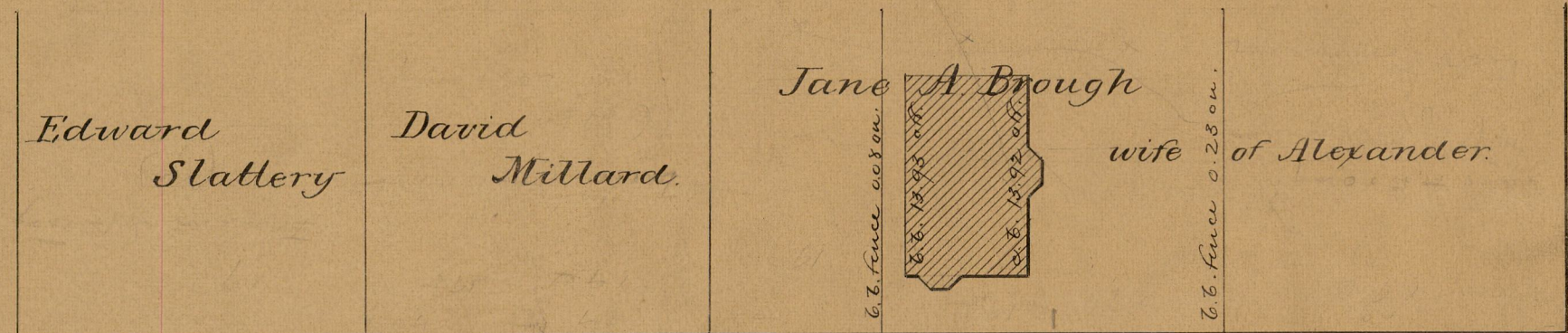
FROM ACADEMY AVE. TO PEMBERTON ST.

SCALE 40 FEET PER INCH.

360.00

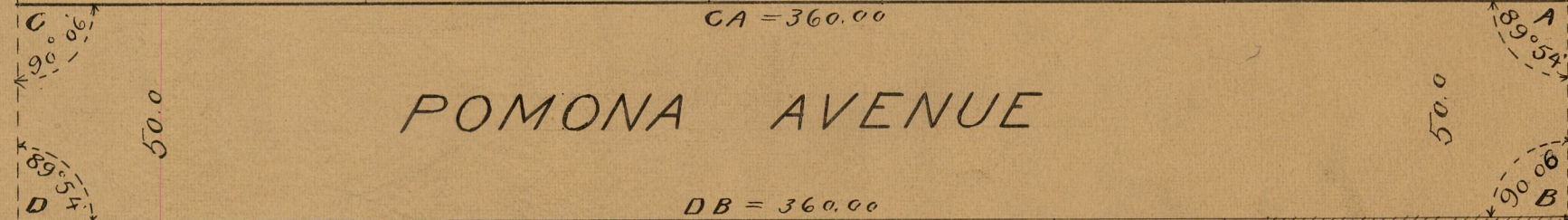


PEMBERTON ST.

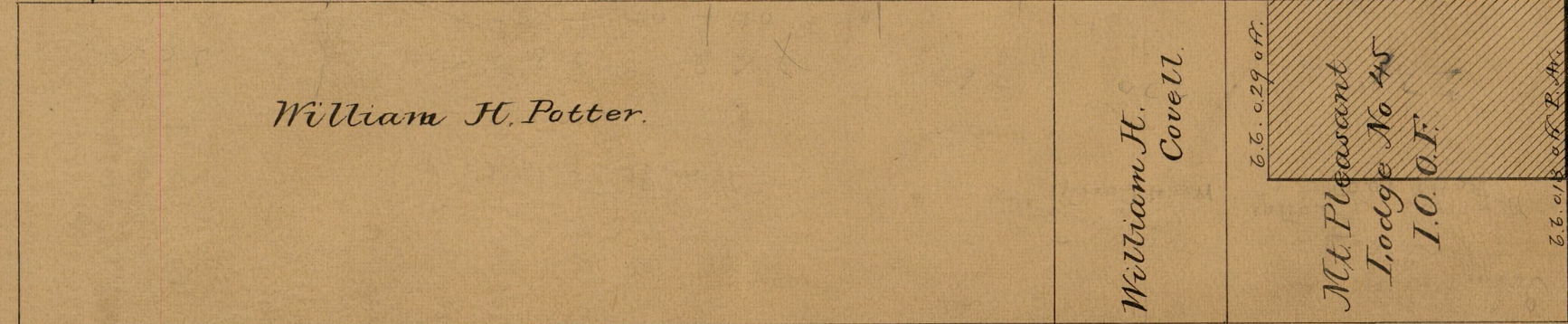


CA = 360.00

POMONA AVENUE



DB = 360.00



ACADEMY AVENUE

83
A-50

83
A-50

OFFICE NO. 9367
DRAWN BY 83
SHEET A-50